



ARKANSAS

TV & FILM LOOKBOOK

2023
EDITION

PRESENTED BY
BENTONVILLE STUDIOS

MELBA THEATER - BATESVILLE
OZARK REGION



TO MY FELLOW STORYTELLERS

Thank you for choosing
the state of Arkansas as
the home for your next
creative project!



Jason Netter | Owner
Bentonville Studios &
Kickstart Entertainment



Zak Heald | Owner
Bentonville Studios &
Intercut Productions

Bentonvillestudios.com
info@farmstudiosnwa.com



BENTONVILLE STUDIOS

With 10,000 square feet of dedicated studio space, you can design, build, and shoot anything your project demands.

Learn More:

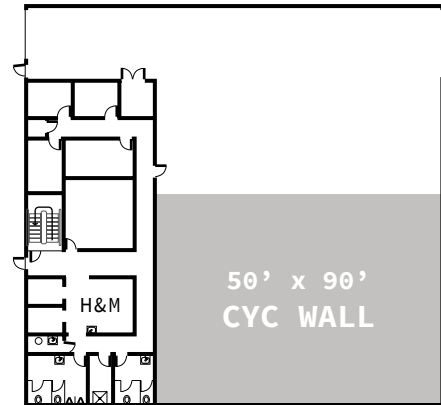
Bentonvillestudios.com
info@farmstudioswa.com



STAGE 001

- .17,200 total sq. ft.
- .10,000 sq. ft. stage
- .3,000 sq. ft. workshop
- .50'L x 90'W x 15'H cyc
- .19' ceilings
- .14' x 16' roll gate
- .400 AMP, 3 Phase
- .Multi-zone HVAC
- .Internet & wireless network
- .Secure keycard access
- .Restrooms & private shower
- .Kitchen & lounge area
- .Green room
- .2 Private offices
- .Hair, makeup & wardrobe

MAIN FLOOR



2nd FLOOR

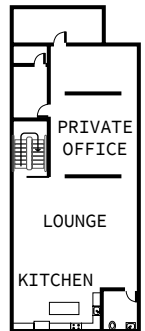




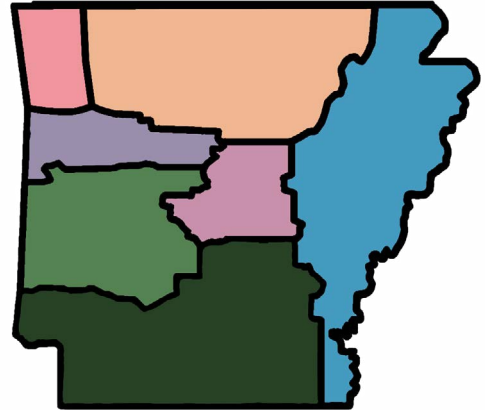
TABLE OF CONTENTS

1	ABOUT ARKANSAS
3	NORTHWEST ARKANSAS REGION
9	OZARK REGION
15	RIVER VALLEY REGION
21	CENTRAL ARKANSAS REGION
27	OUACHITA REGION
33	DELTA REGION
37	TIMBERLANDS REGION
43	INCENTIVES
45	SUPPORT

ABOUT ARKANSAS

OVERVIEW

Arkansas is a state with a rich history, diverse geography, and vibrant culture. From its forests and mountains in the Ozark and Ouachita regions to its agricultural flatlands in the Delta region, Arkansas offers something for everyone. With its vast variety of architectural styles, from traditional to modern, and its unique culture, Arkansas is a place like no other.



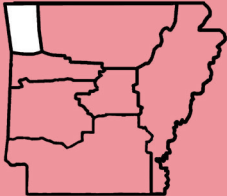
NORTHWEST ARKANSAS REGION

MAJOR CITIES

- Bentonville
- Siloam Springs
- Fayetteville
- Springdale
- Rogers

CHARACTERISTICS

- Major metropolitan area with booming economic development
- Features rolling hills with revitalized downtown areas



DOWNTOWN BENTONVILLE



CRYSTAL BRIDGES | BENTONVILLE

5



THE MOMENTARY | BENTONVILLE

6



THADEN FIELD | BENTONVILLE



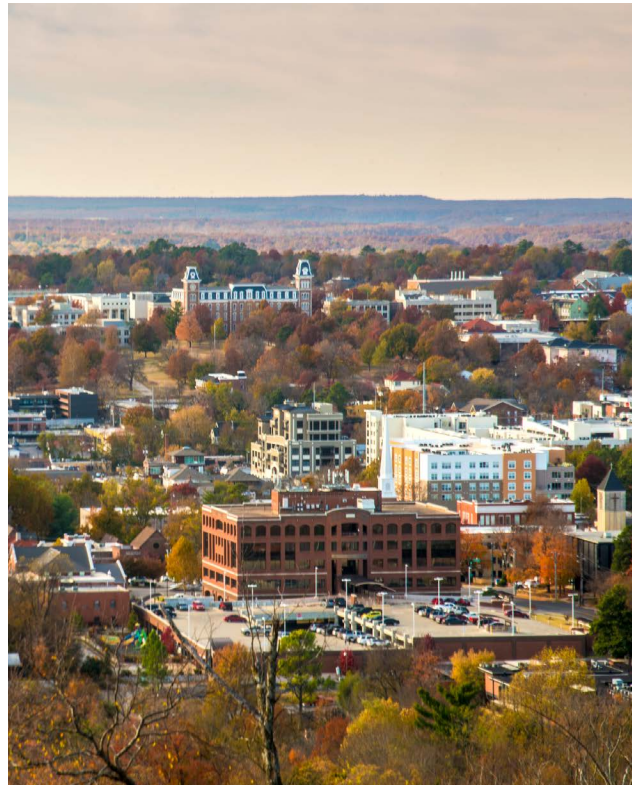
WALMART AMP | ROGERS



DICKSON | FAYETTEVILLE



NWA TRAILS



UNIVERSITY OF ARKANSAS | FAYETTEVILLE

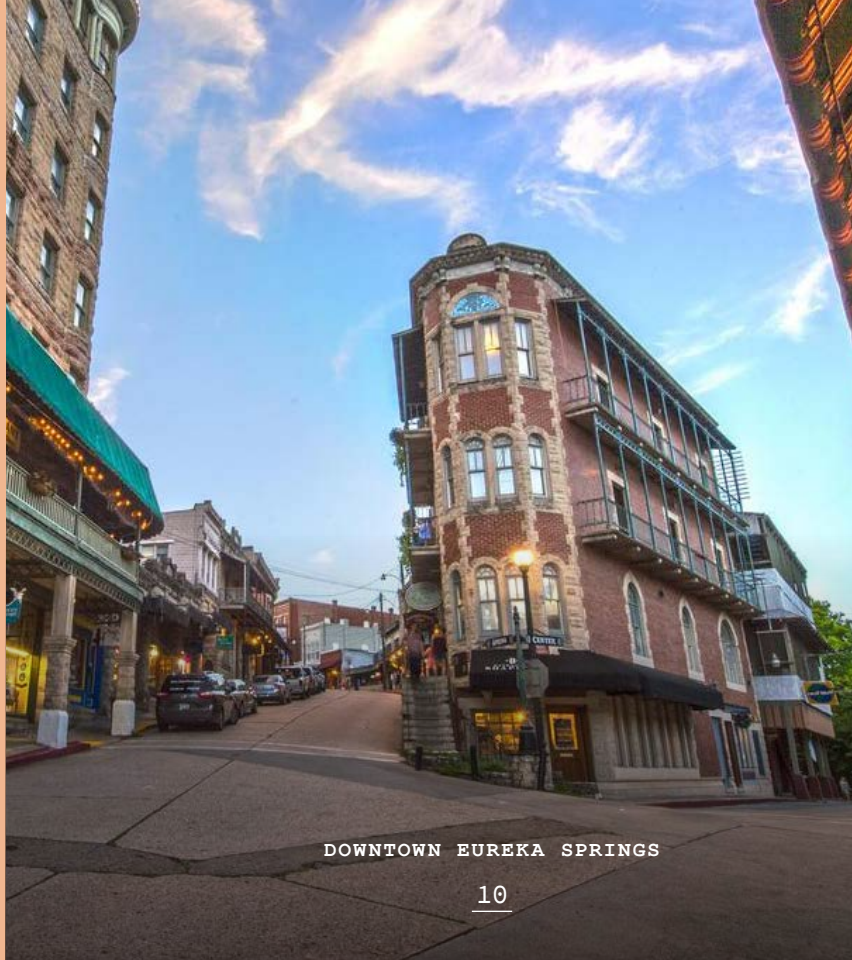
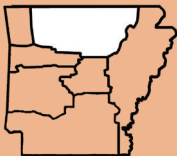
OZARK REGION

MAJOR CITIES

- Eureka Springs
- Harrison
- Jasper
- Kingston
- Ponca

CHARACTERISTICS

- Small communities nestled in the rolling hills of the Ozarks
- Features classical brick architecture



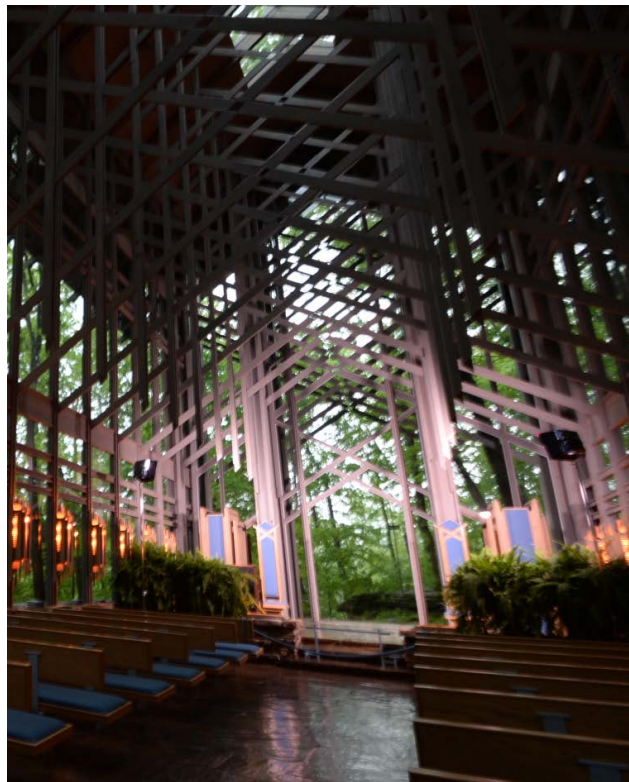
DOWNTOWN EUREKA SPRINGS



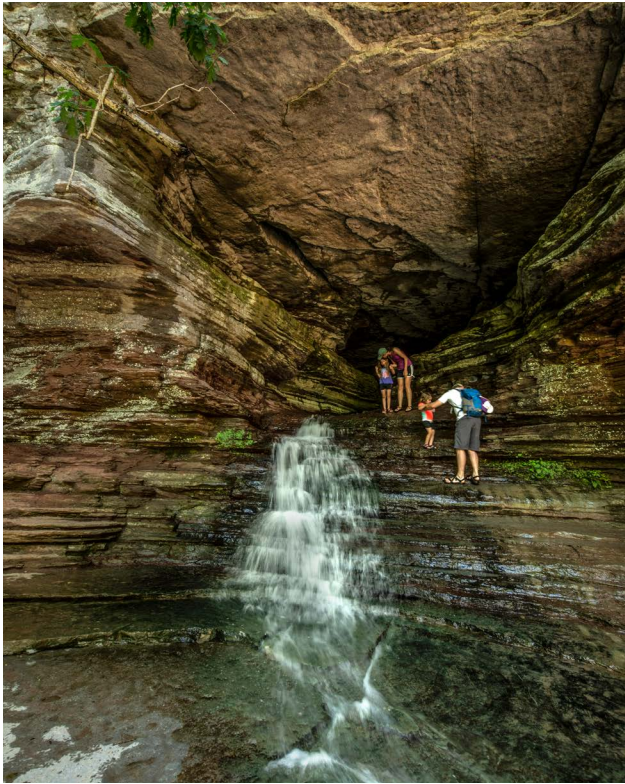
PASSION PLAY | EUREKA SPRINGS



CORCOVADO CHRIST | EUREKA SPRINGS



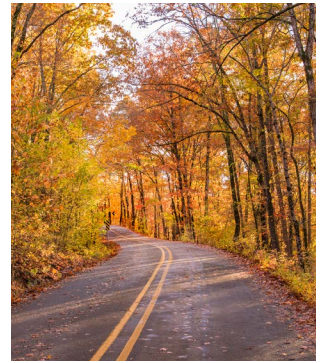
THORNCROWN CHAPEL | EUREKA SPRINGS



LOST VALLEY TRAIL | PONCA



BUFFALO RIVER | PONCA



DEVIL'S DEN | WEST FORK



BEAVER LAKE | EUREKA SPRINGS

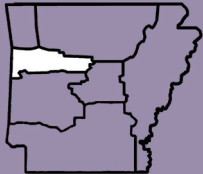
RIVER VALLEY REGION

MAJOR CITIES

- Clarksville
- Russellville
- Fort Smith
- Van Buren
- Ozark

CHARACTERISTICS

- Small town downtowns situated on the nation's major waterways and major power producers
- Sits between the Ozarks & Ouachita mountain ranges



GARRISON AVE - FORT SMITH



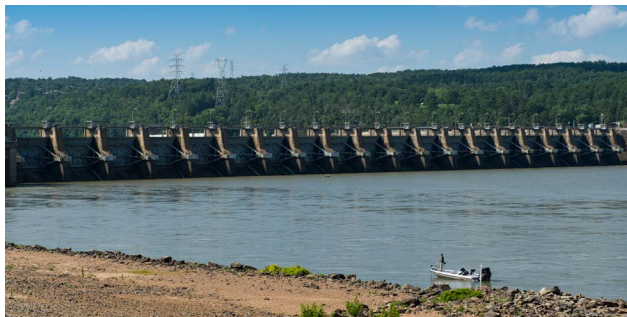
PARK AT WEST END | FORT SMITH



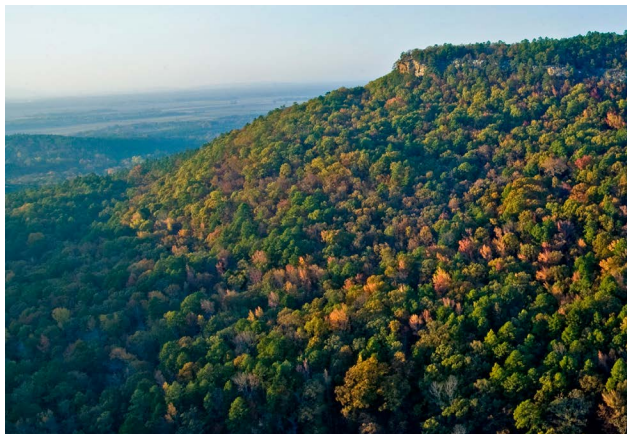
OK FOODS MILL | FORT SMITH



NUCLEAR ONE | RUSSELLVILLE
PHOTO BY JUSTIN DUKE



DARDENELLE DAM | DARDENELLE



PETIT JEAN STATE PARK | MORRILTON

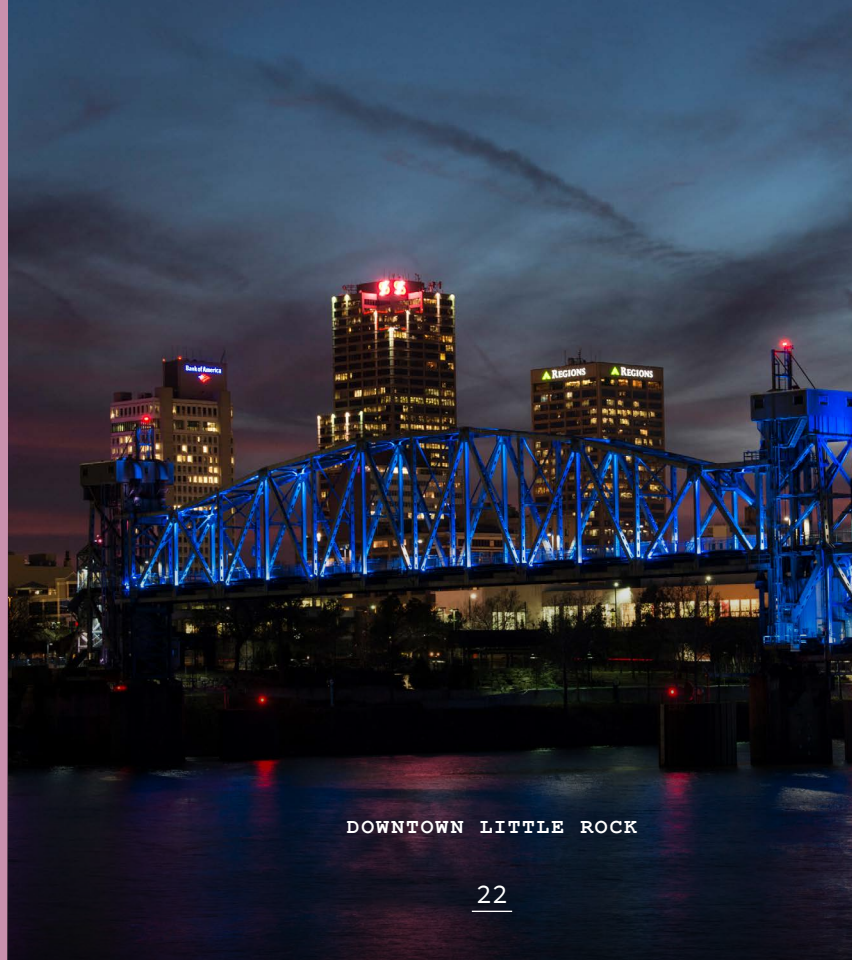
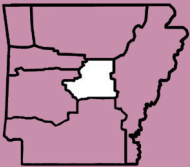
CENTRAL ARKANSAS REGION

MAJOR CITIES

- Conway
- Little Rock

CHARACTERISTICS

- Major metropolitan area with booming economic development
- Features tall skyscrapers positioned around the Arkansas River



DOWNTOWN LITTLE ROCK



ARKANSAS CAPITOL BUILDING | LITTLE ROCK



RIVER MARKET | LITTLE ROCK



WAR MEMORIAL STADIUM | LITTLE ROCK



CLINTON LIBRARY | LITTLE ROCK



LAKE CONWAY | CONWAY



HENDRIX COLLEGE | CONWAY

OUACHITA REGION

MAJOR CITIES

- Avant
- Hot Springs
- Malvern
- Mena
- Waldron

CHARACTERISTICS

- Small mountain communities
- Features classic brick architecture
- Located near placid lakes and ponds



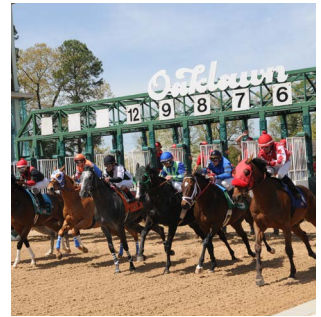
DOWNTOWN HOT SPRINGS



BATH HOUSES | HOT SPRINGS



WOLFPEN GAP | MENA



OAKLAWN | HOT SPRINGS



DOWNTOWN MENA



ESSO GAS STATION | MENA

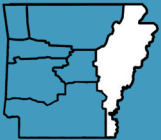
DELTA REGION

MAJOR CITIES

- Brinkley
- Helena-West Helena
- Lake Village
- Pine Bluff
- Stuttgart
- West Memphis

CHARACTERISTICS

- Marshy flatlands
- Home to agriculture and wildlife



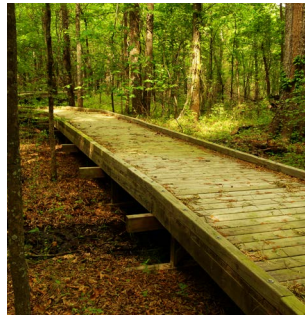
ARKANSAS DELTA - DES ARC



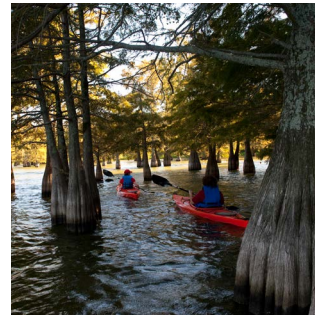
ARKANSAS AGRICULTURE | DES ARC



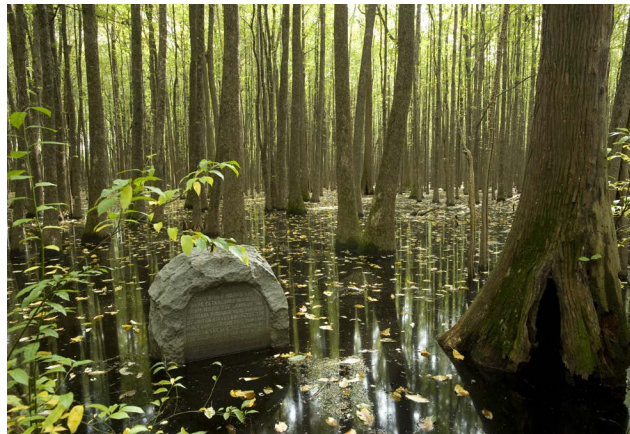
DOWNTOWN HELENA



BARTHOLOMEW BAYOU | PINE BLUFF



LAKE CHICOT | LAKE VILLAGE



LOUISIANA PURCHASE HISTORIC STATE PARK | BRINKLEY

TIMBERLANDS REGION

MAJOR CITIES

- El Dorado
- Murfreesboro
- Felsenthal
- Texarkana
- Hope

CHARACTERISTICS

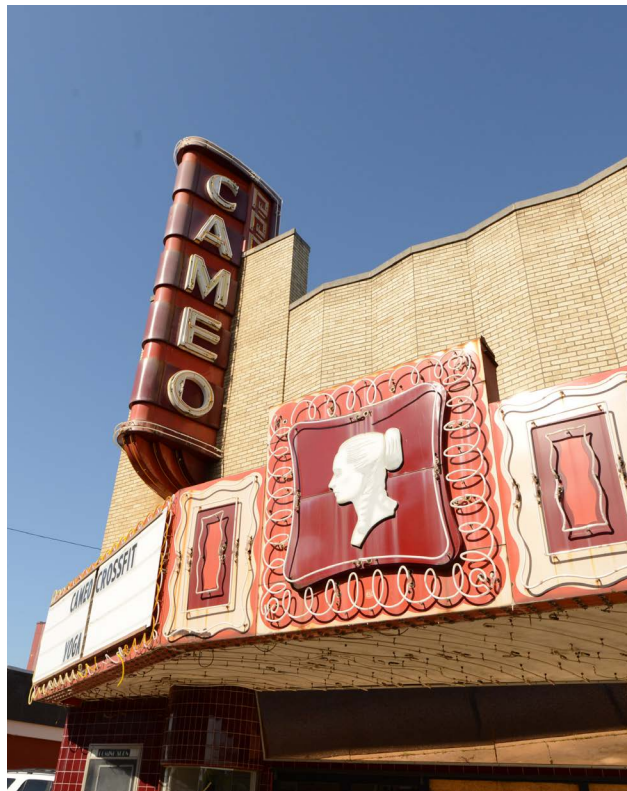
- Small communities located in the flatlands of Arkansas
- Shares larger border towns with neighboring states



CRATER OF DIAMONDS - MURFREESBORO



DOWNTOWN TEXARKANA



CAMEO | MAGNOLIA



NATIONAL WILDLIFE REFUGE | FELSENTHAL



DOWNTOWN EL DORADO



DOWNTOWN HOPE



INCENTIVES

CASH REBATE

RENEWED
THROUGH
2029

ONE OF THE TOP US CASH REBATE INCENTIVES

20% on all production expenditures in Arkansas

20% on out of state resident wages/salaries

30% on Arkansas resident below-the-line wages/salaries

Below-the-line does not include directors and producers but for purposes of the additional 10%, resident actors and writers are defined as below-the-line.

TO QUALIFY:

- Register with the Film Office & Submit an Application
- Submit an Estimate of Expenditures
- Meet the Minimum Spend Requirement
 - \$50,000 within 6 Months for Post Production Project
 - \$200,000 within 6 Months for Production Project
- Apply for a Production Rebate Certificate within 180 days of Last Production Expense

QUALIFIED SPEND

- LABOR COMPENSATION*
- LODGING/ACCOMODATIONS
- BUILDING RENTALS
- FOOD/RESTURANT EXPENSES
- EQUIPMENT RENTAL/PURCHASE
- MATERIALS RENTAL/PURCHASE
- LOCATIONS & STUDIO RENTALS
- LIVING EXPENSES
- TRANSPORTATION
- OVERNIGHT COURIER SERVICES
- TRAVEL EXPENSES
- CONTRACTED SERVICES
- INSURANCE
- ARKANSAS MUSIC



INDUSTRY SUPPORT

Arkansas Film Commission

Arkansas provides visionary producers with seamless and efficient single-contact access to state film incentives, production houses, skilled crews, casting agencies and the resources that help filmmakers get from script to wrap party.

1000+ Registered Arkansas Crew Members

Arkansas has hardworking film professionals based throughout the state. As a one-stop shop for productions looking to crew up in Arkansas, the Arkansas Production Directory can connect your project with:

- local producers
- writers
- production managers
- accountants
- camera operators
- costume designers
- transportation coordinators
- location scouts
- lots more

110+ Registered Support Services

Access the Arkansas Production Directory to view our roster of registered support services throughout the state, including:

- Production Companies
- Equipment Rental
- Housing and Accommodations
- Travel Agencies
- Soundstage Facilities
- Casting Agencies

Higher Education Programs

- University of Arkansas
- John Brown University
- Southern Arkansas University Technical
- University of Central Arkansas

Arkansas Film Festivals

- Rogers Short Film Festival
- Forth Smith International Film Festival
- 48 Hours Film Project – Little Rock
- AETN Student Selects
- Bentonville Film Festival
- El Dorado Film Festival
- Eureka Springs Film Festival
- Fayetteville Film Festival
- Hot Springs Documentary Film Festival
- Ozark Foothills FilmFest
- Arkansas Cinema Society: Filmland



COMMUNITY SUPPORT

Arkansas & City Tourism Boards

Arkansas Tourism and city tourism boards have compiled resources for incoming filmmakers to ensure each production can move with ease – reference arFILM and FilmNWA for your next production to see how the state and each city can be your best asset during production.

FilmNWA

The Northwest Arkansas Film & Entertainment Commission was founded by the major Northwest Arkansas cities through their advertising and promotion commissions. FilmNWA is a collaboration with the State of Arkansas Film Commission Office and the Arkansas Production Alliance.

Their regional team approach to production provides producers with seamless, easy access to everything the region has to offer.

The Northwest Arkansas Film & Entertainment Commission can be found at:

filmnwa.org

